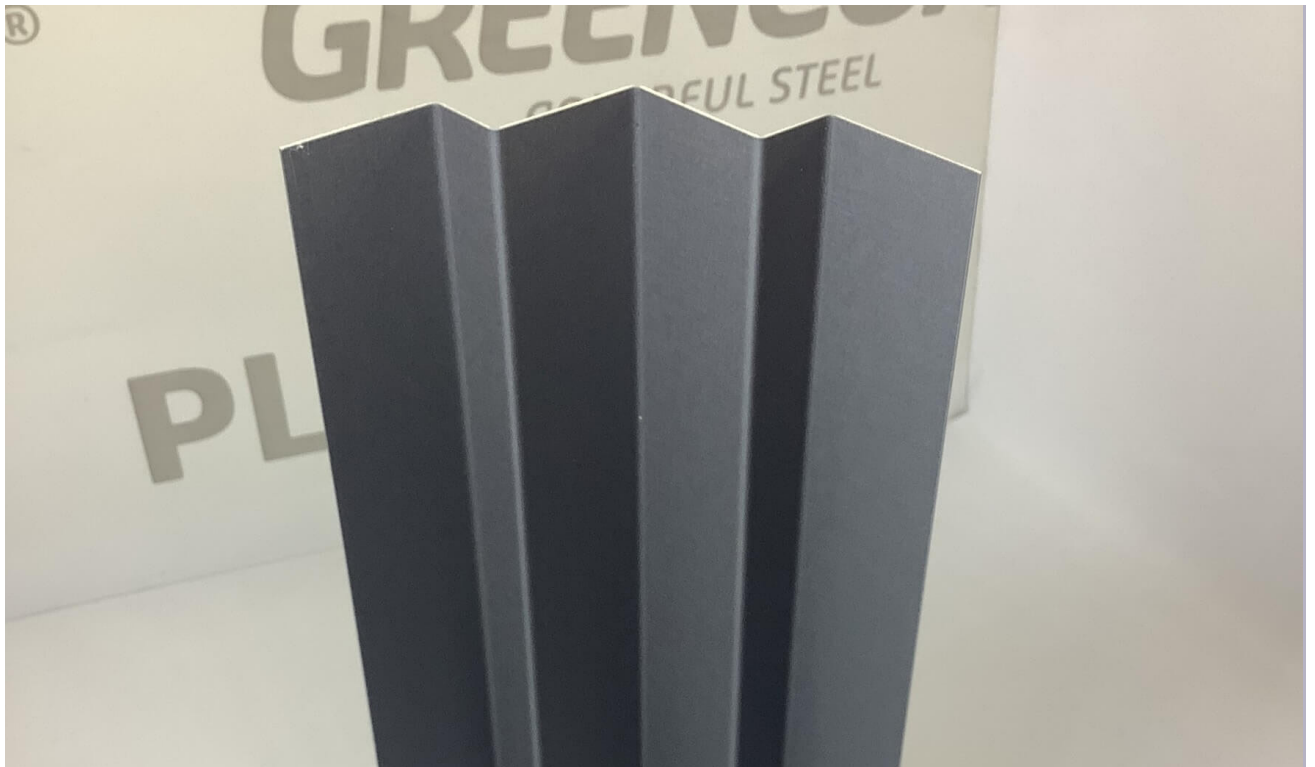


Reveal Panel Flashings

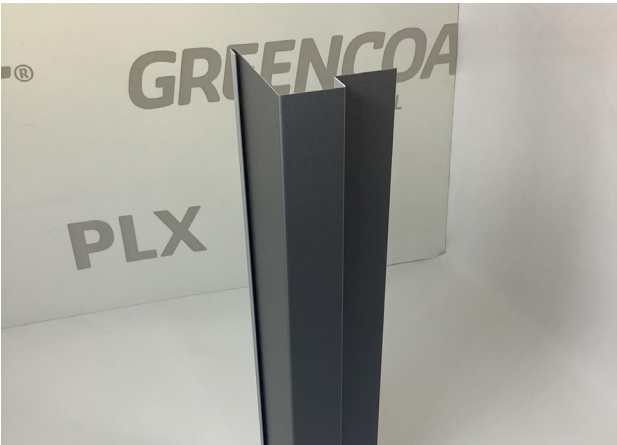
Pages 30 & 31 are flashing for use when installing reveal panels horizontally.

Pages 32 & 33 are flashing for use when installing reveal panels vertically.



Internal Corner

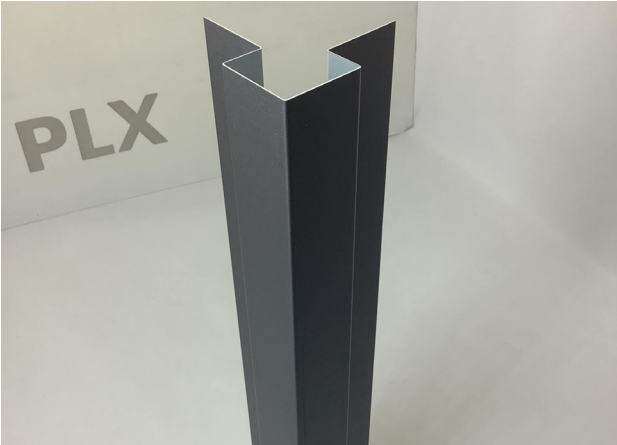
Horizontal Lay Reveal Panel Flashings



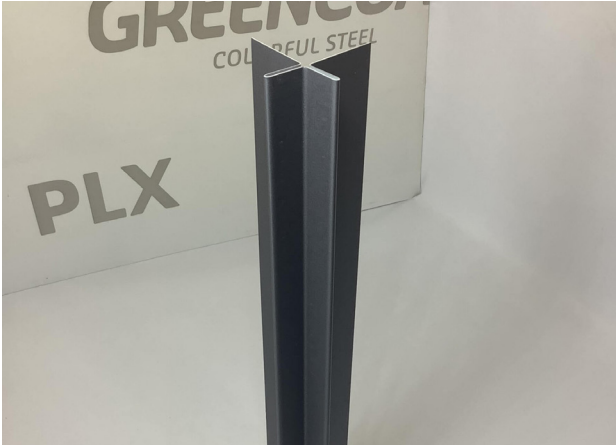
Jamb 1H



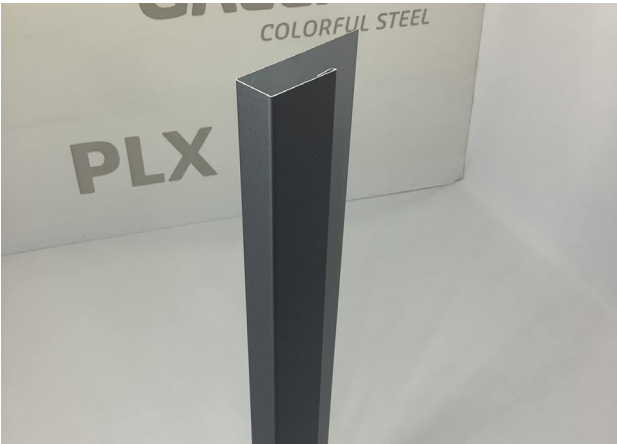
Jamb 2



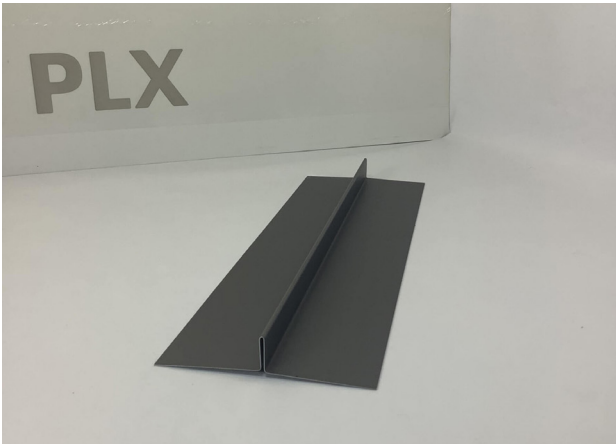
Corner 3



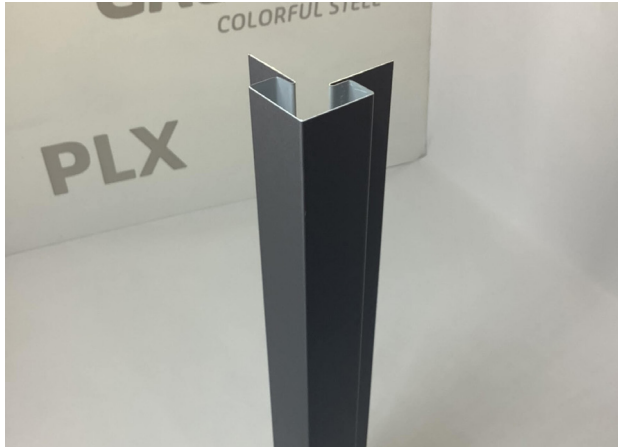
Corner 4



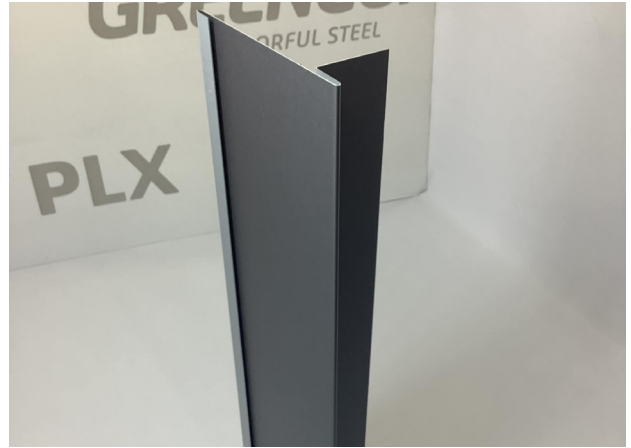
Box Abutment



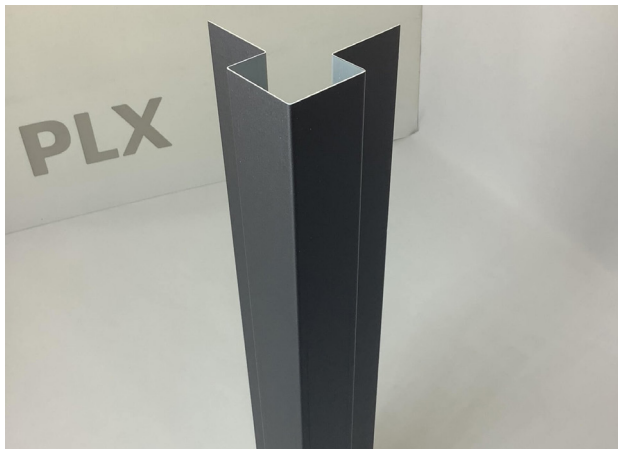
Panel Abutment



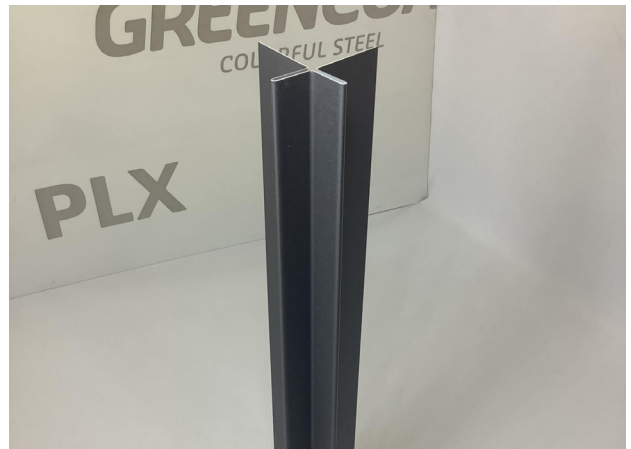
Corner 1



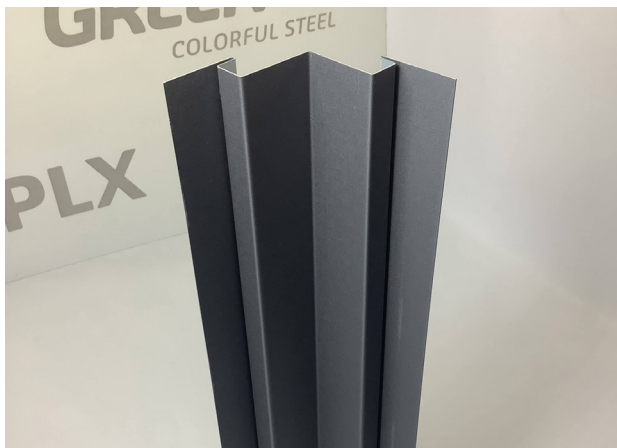
Corner 2



Corner 3



Corner 4

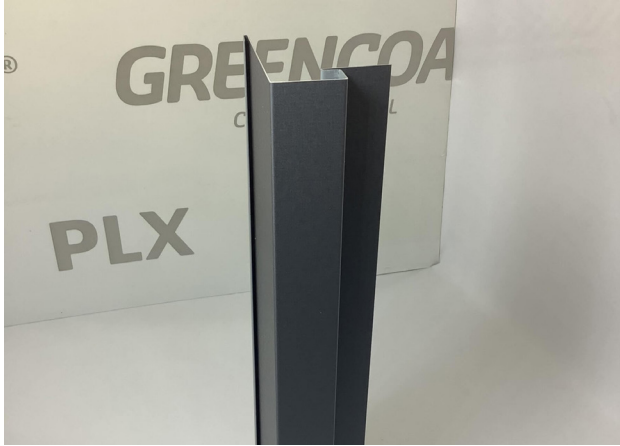


Internal Corner



Wall Abutment

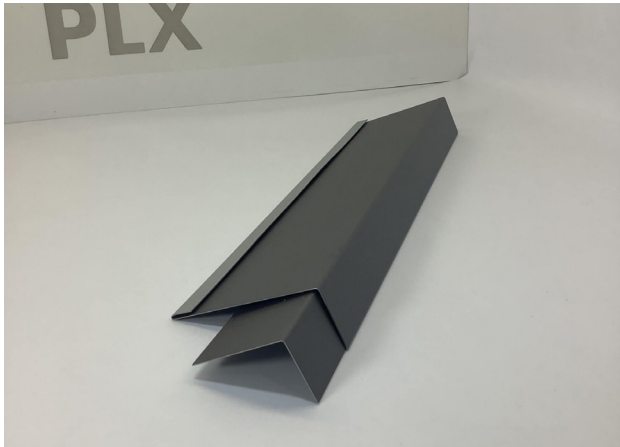
Vertical Lay Reveal Panel Flashings



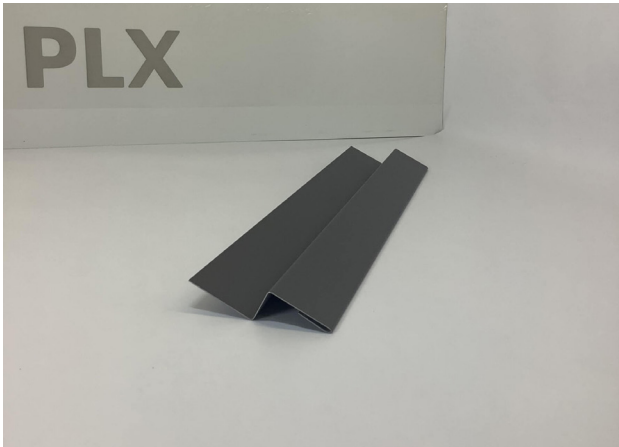
Jamb 1



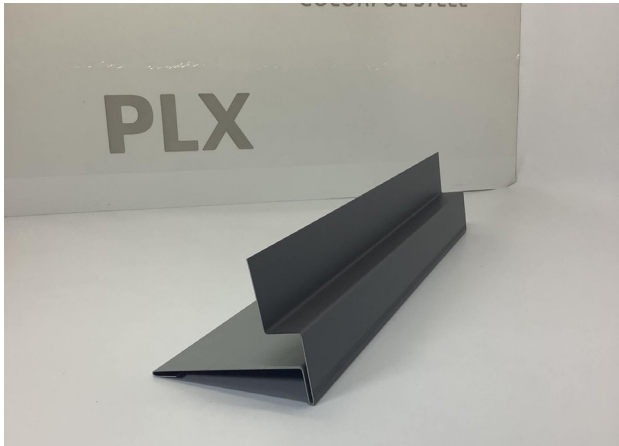
Jamb 2



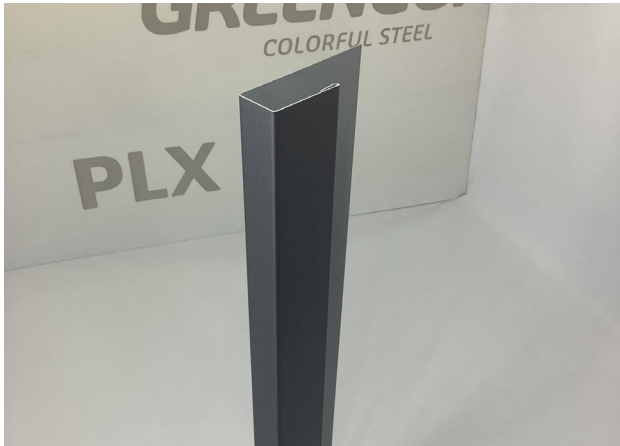
Ventilated Cill



Small Cill



Base Head 1



Box Abutment