

GreenLine

Full System:

GreenLine® Gutters come in standard lengths of 2400mm.

They are 125mm half round gutters with a rolled front edge.

Can be ordered a with all components to make up a system.

Including joints, stop ends, outlets pipes, pipe brackets, shoes, hoppers etc.

Available Colours:

GreenLine® Gutters are normally supplied in nordic night black, mountain grey and metallic dark silver.

Other colours may be available.

Greenline Gutter (Metallic Dark Silver)





Greenline Gutter Components



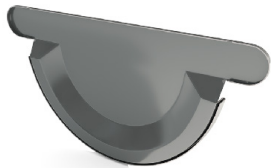
16



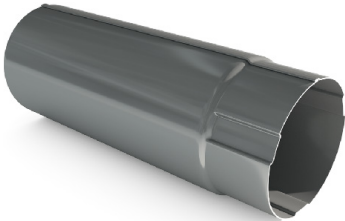
17



9



8



12,13,14



11



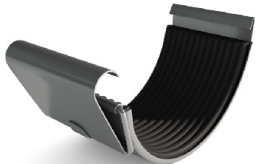
2



15



18



10

Greenline Gutters Order Form

Greenline Gutter System Componentes

Product #	Component	Quantity
1	Half round gutter 125mm x 2400mm	
2	Half round gutter fascia bracket	
3	Half round gutter rafter bracket	
4	Half round gutter internal corner	
5	Half round gutter external corner	
6	Internal Corner - Custom Angle	
7	External corner - Custom Angle	
8	Half round gutter stop ends	
9	Half round gutter drop outlet	
10	Half round gutter joint	
11	Round Pipe 60 deg bend	
12	Round rainwater pipe 90mm x 500mm	
13	Round rainwater pipe 90mm x 1000mm	
14	Round rainwater pipe 90mm x 2400mm	
15	Round pipe bracket	
16	Round pipe Y-Branch	
17	Round pipe water diverter	
18	Round pipe shoe	
19	Rainwater pipe hopper	

Metal/Finishes

0.6mm Greenline
Mountain Grey
Nordic Night Black
Metallic Dark Silver
Cottage Red
Tile Red
Metallic Copper

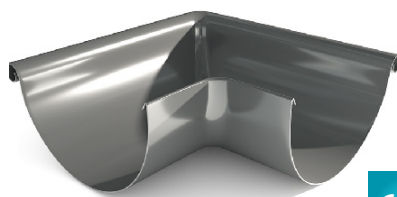


19

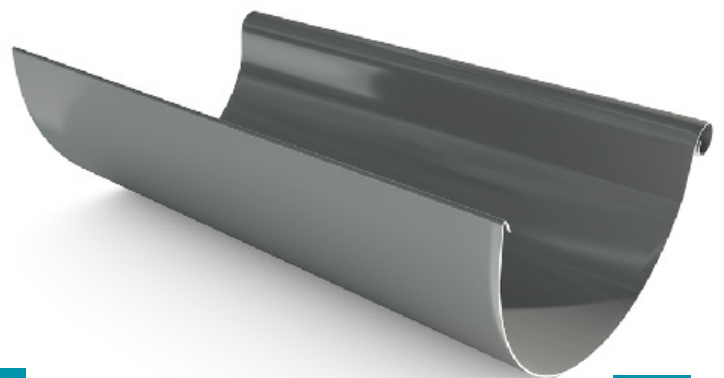
Customer Name	Project Ref.	Sheet No.	Date



3



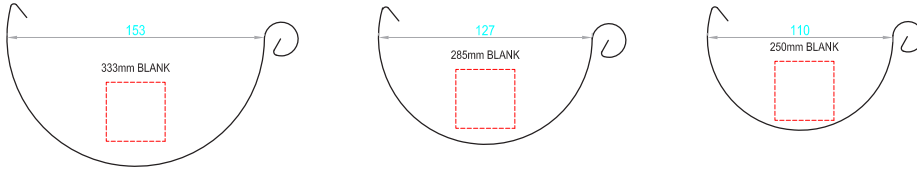
6,7



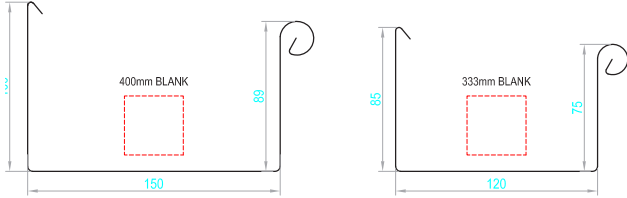
1

Bespoke Rainwater Goods Checklist

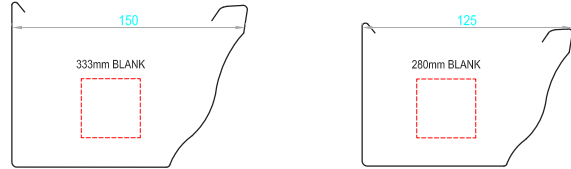
HALF ROUND



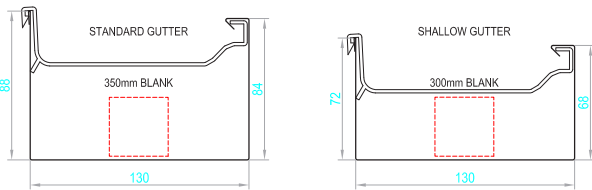
SQUARE



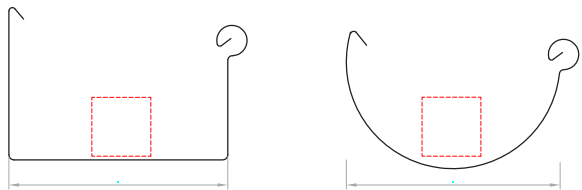
OGEE



TATA STYLE

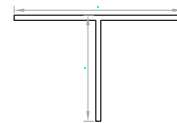
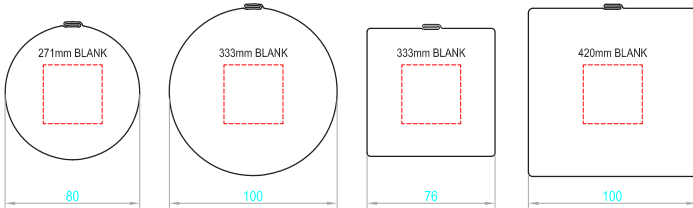


REVERSE SCROLL / BEAD



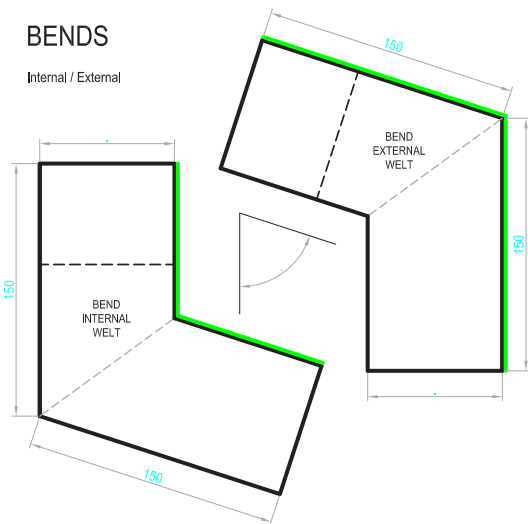
DOWNPIPES

Round / Square

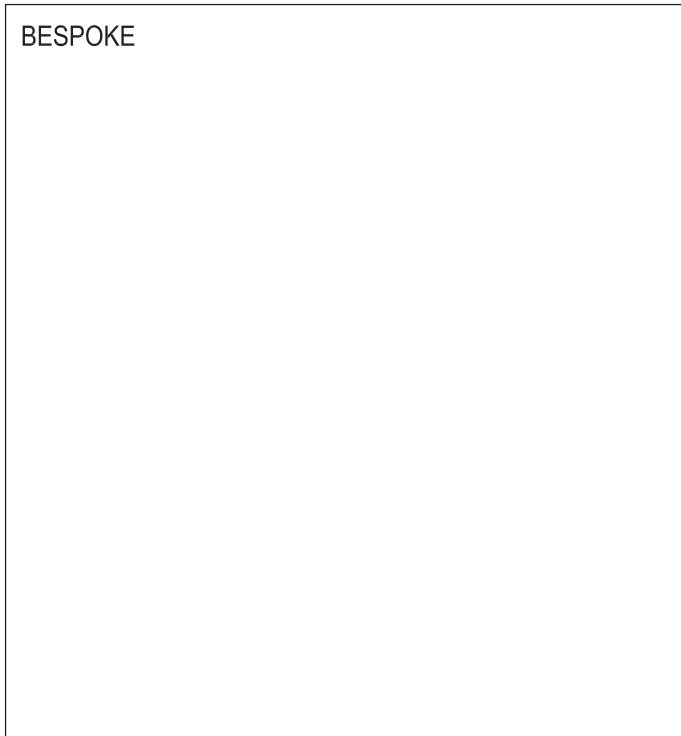


BENDS

Internal / External



BESPOKE



Customer Name	Project Ref.	Sheet No.	Date	Metal Finish